



Letšeng Mine - Life of Mine 2015

Update Presentation

22 May 2015

The most recent update of the Letšeng Life of Mine plan (published 17 March 2015) has resulted in:

- ✦ A significantly improved NPV over the life of the mine
- ✦ A 15% increase in higher value satellite ore being treated annually from 2015 to 2019
- ✦ A 39% increase in higher value satellite ore being treated from 2020 onwards
- ✦ The life of the open pits being extended until 2038
- ✦ A smoother waste mining profile with a reduced peak of 36mtpa
- ✦ An overall reduction in stripping ratios

These results have been achieved following the operational improvements introduced through:

- ✦ improved blasting practice
- ✦ geotechnical controls
- ✦ mining efficiencies.



- ✦ Long term mine plans for Letšeng are updated annually on most current market and operational information
- ✦ The 2015 update is of greater significance as it incorporates a significant steepening of the pit slopes made possible by improved blasting practices and pit-wall protection
- ✦ The increase in treatment rate resulting from the No 2 Plant Phase 1 Upgrade project is incorporated
- ✦ The main objectives of the mine plan revision are as follows:
 - ✦ To enhance value
 - ✦ To optimise / defer waste stripping
 - ✦ To optimise/maximise the percentage of the higher grade, higher value satellite ore treated



Pit Wall Protection

The following initiatives have contributed to pit wall protection resulting in the steepening of the pit walls:

- ✦ Employment of a Blasting Engineer
- ✦ Engagement of Blasting Consultant
- ✦ Establishment of a Geotechnical Department
- ✦ Improved wall and floor control - better pre-splits
- ✦ Electronic blasting
- ✦ Real time slope monitoring
- ✦ Commissioning of a Scaler



Objectives

- ✦ To enhance value
- ✦ Optimise/defer waste
- ✦ Optimise/maximise Satellite contribution
- ✦ Incorporate steeper slopes in pit design (70° v 65°)

Basis

- ✦ 2014 Reserve grades and prices
- ✦ 6mtpa of ore treated through Plants 1 & 2
- ✦ Contractor operation (AV) to continue - end of 2016
- ✦ Incorporates additional 0.25mtpa ore treated from 2016 from Plant 2 Upgrade Project
- ✦ Does not currently include further expansion opportunities
- ✦ Operating Costs*
 - Direct cash cost per tonne treated (exc waste) M150.00
 - Waste cost per waste tonne mined M29.00

Output Maximising value

- ✦ Satellite Ore tonnage ramp up
 - 2015 to 2019 increased from 1.44 to 1.65 mtpa
 - 2020 to end increased from 1.44 to 2.00 mtpa
- ✦ Significantly increased NPV

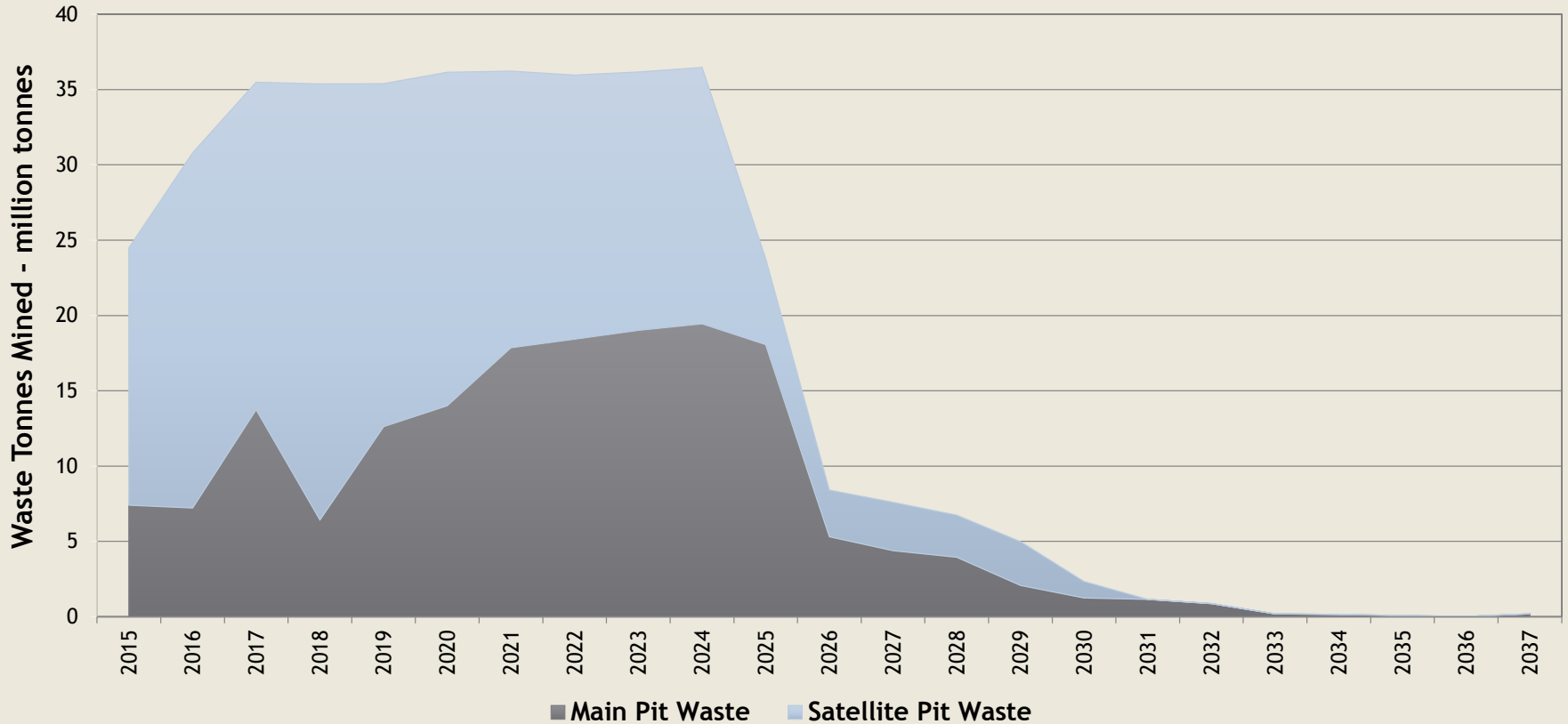
- ✦ Smoother profile of waste
- ✦ Peak waste of 36 mtpa
- ✦ Stripping ratios (LoM):

Main Pit	-> 1.6
Satellite	-> 6.7
Combined	-> 2.9

*Costs are as per 2015 guidance and in 2015 terms

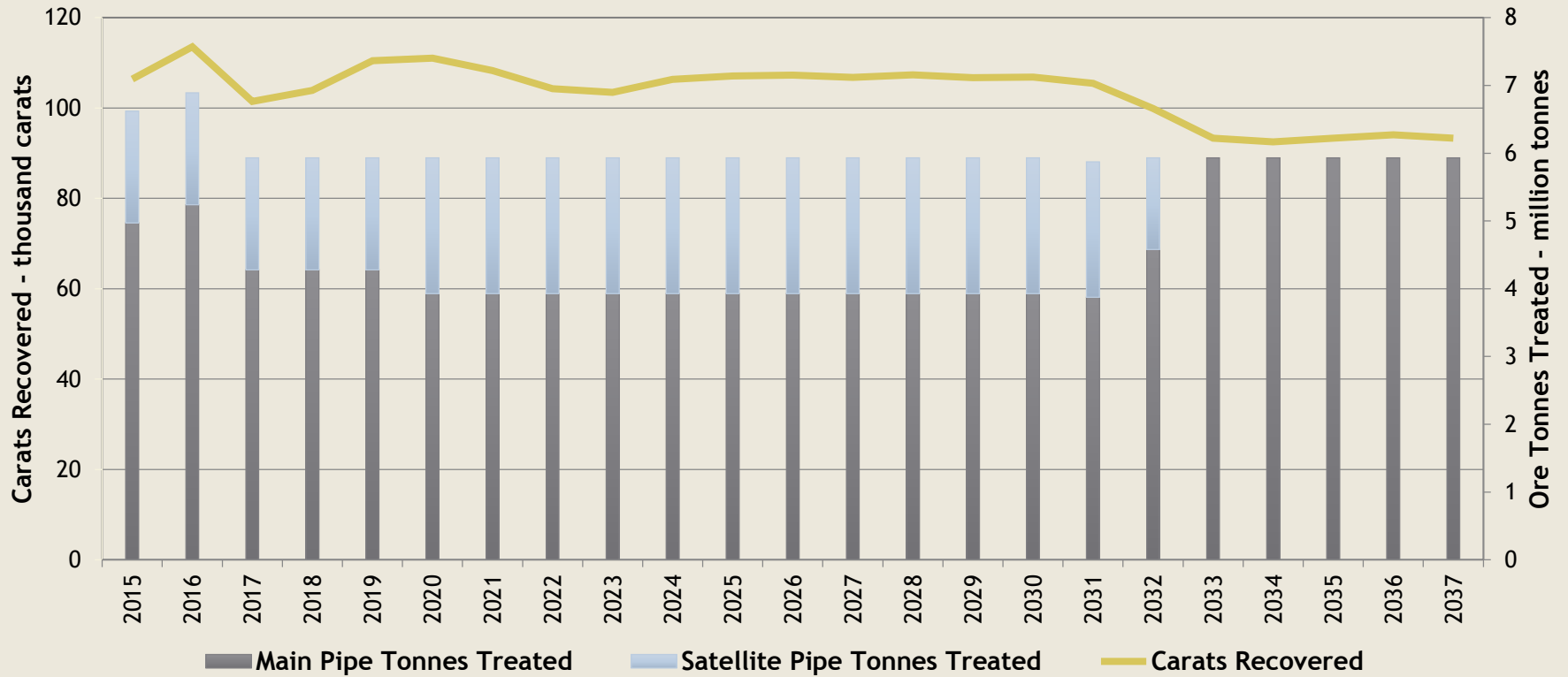


Updated LoM Plan Waste Mining Tonnage Profile



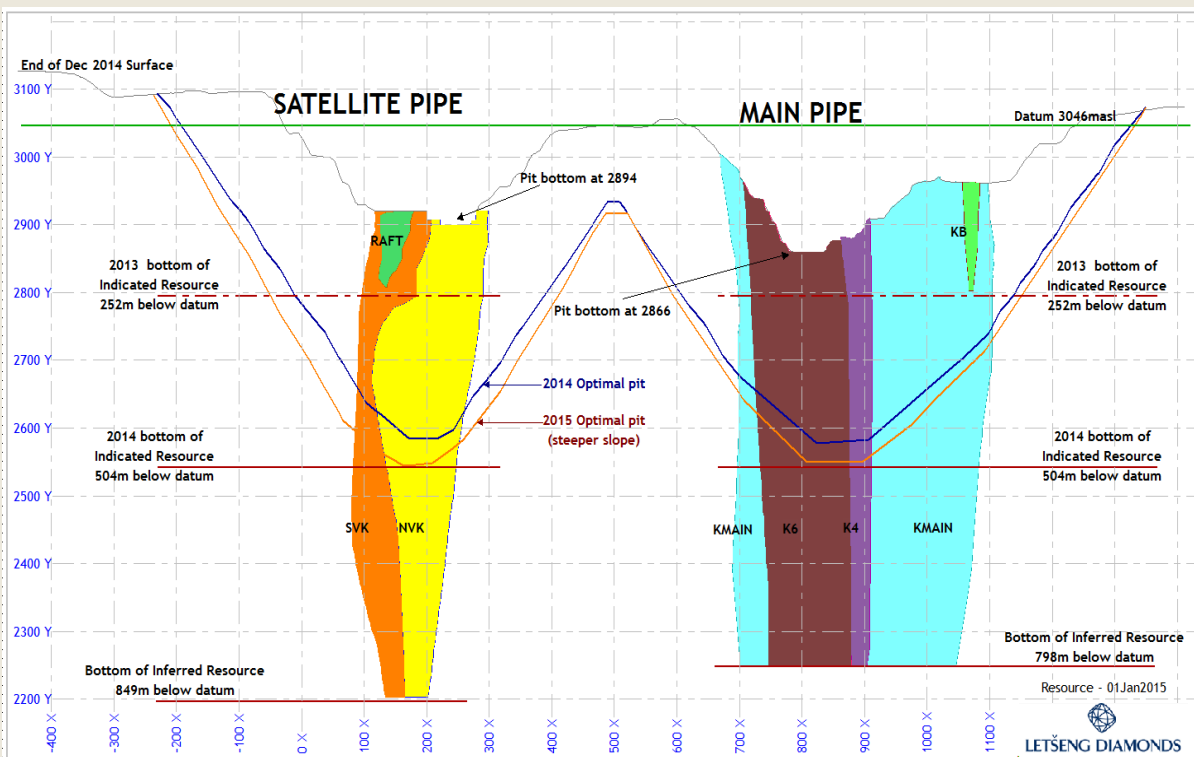
Tonnes Treated / Carats Recovered Profile

Updated LoM Plan Treated Tonnes and Carats Recovered Profile



Letšeng reserves and resources

As at 1 January 2014	Carats (millions)	Grade (cph)	US\$/ct	In-situ value (US\$ billions)
Letšeng Indicated Resource	3.23	1.73	2 086	6.7
Letšeng Reserve	2.26	1.71	2 045	4.6



- ◆ 2014 Extension of Indicated depth at Letšeng to 350m below mining face
- ◆ Letšeng Life of Mine open pit is wholly contained within the Reserve category
- ◆ The reserve, based on the 2015 pit design, will be updated by mid 2015.

